



HAZARD™ for AssetCapture™

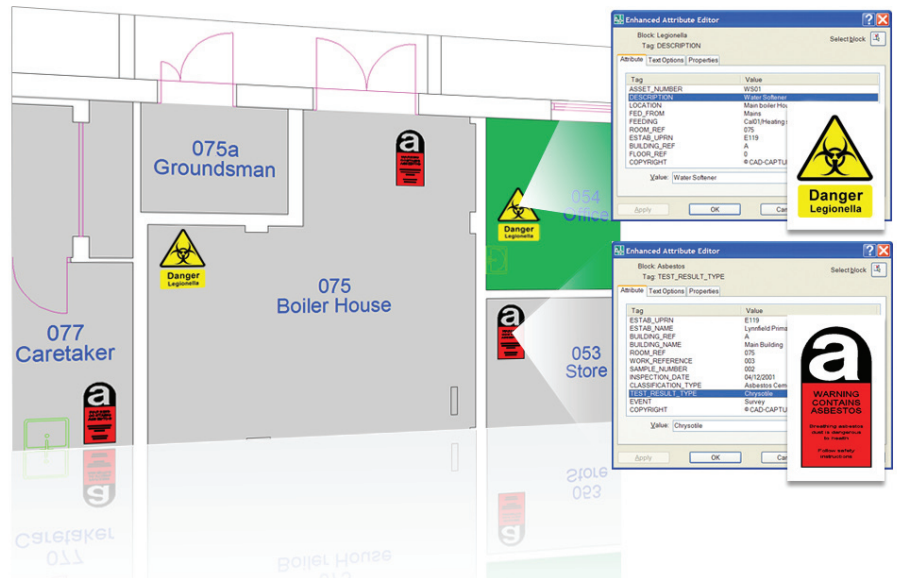
“Intelligent CAD Files™ for Hazard Management”

Hazard is a powerful software utility to automatically map hazards on to drawings from an external data source. For example, Hazard can be used to process data from an external asbestos database and flag rooms containing asbestos with a particular risk value. Furthermore, data from the external asbestos database can be displayed in the drawing.

Hazard extends the functionality of AutoCAD by adding additional commands.

Hazard can use any symbol or icon to flag hazards in a drawing and different flags can be used to map different types of hazard.

Hazard can add, update and remove hazard flags from a drawing. Once a drawing contains hazard flags these may be repositioned to other parts of the drawing and the new positions can be maintained even when the database is updated.



About Cad-Capture

Cad-Capture provides a complete range of solutions enabling organisations to capture and manage their engineering documents, drawings and data.

The fusion of specialist document conversion and data services with many years experience in systems implementation and application hosting makes it possible for Cad-Capture to provide truly effective solutions.

When considering document, content and data management projects, customers can be confident that Cad-Capture will provide the best available solution.